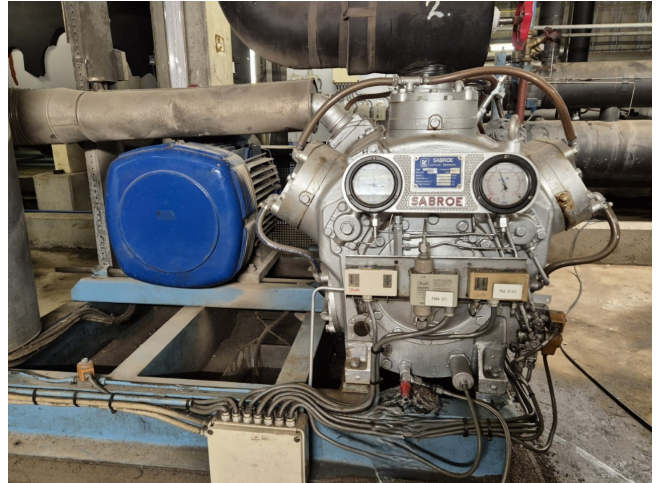


Sabroe SMC 112L

Specifications

Marka	Sabroe
Typ	SMC 112L
Czynnik chłodzący	NH 3 (ammonia)
kW at +10°C/+40°C	742,2
kW at 0°C/+40°C	490,8
kW at -5°C/+40°C	390,6
kW at -10°C/+40°C	305,6
Rozładunek	✓
Kontrolka wydajności	✓
Podstawa na stalowej ramie	✓
Ciśnieniowe przełączniki bezpieczeństwa	✓
Wskaźniki ciśnienia	✓
Separator oleju	✓
Okno widokowe	✓
Uwagi	*Capacity based on R717 (Ammonia).
Rozmiary	2300x1750x2200 mm (LxWxH)
Stock	1



Description

Used Sabroe SMC 112L

Used Sabroe SMC 112 L open-type reciprocating compressor on NH3 (Ammonia). Complete with a Leroy Somer P 280 S-4 electric motor - 50 Hz - 110 kW - 1465 RPM, oil separator with a volume of 115 liters, pressure and safety switches/gauges and a sight glass.

*Why choose for HOSBV? We are not only the largest used refrigeration specialist in Europe, but also, we deliver all equipment including an extensive test, warranty and an industrial cleaning. *Optionally we can also perform a new paint job and arrange the logistics.

